



# **Eau Claire South Side Gas Reinforcement Project**

*Altoona City Hall – August 13<sup>th</sup> 2015*

# Background

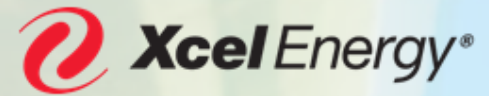
- **Due to growth in the Eau Claire and Altoona areas our natural gas system has low pressure at the tail end of the system.**
- **This project will reinforce the system to resolve the low tail end pressure problem during the winter months.**
- **Current project: 3.5 miles of new pipeline that will reinforce the natural gas delivery system in the area which will assure system reliability in the future.**

# Project Scope

- Install 3.5 miles of new pipeline
- 2.5 miles will be 12" steel
- 1 mile will be 8" steel
- 2 large horizontal bores, one under the Eau Claire River and one under Otter Creek/Hwy 53.



# Project Benefits



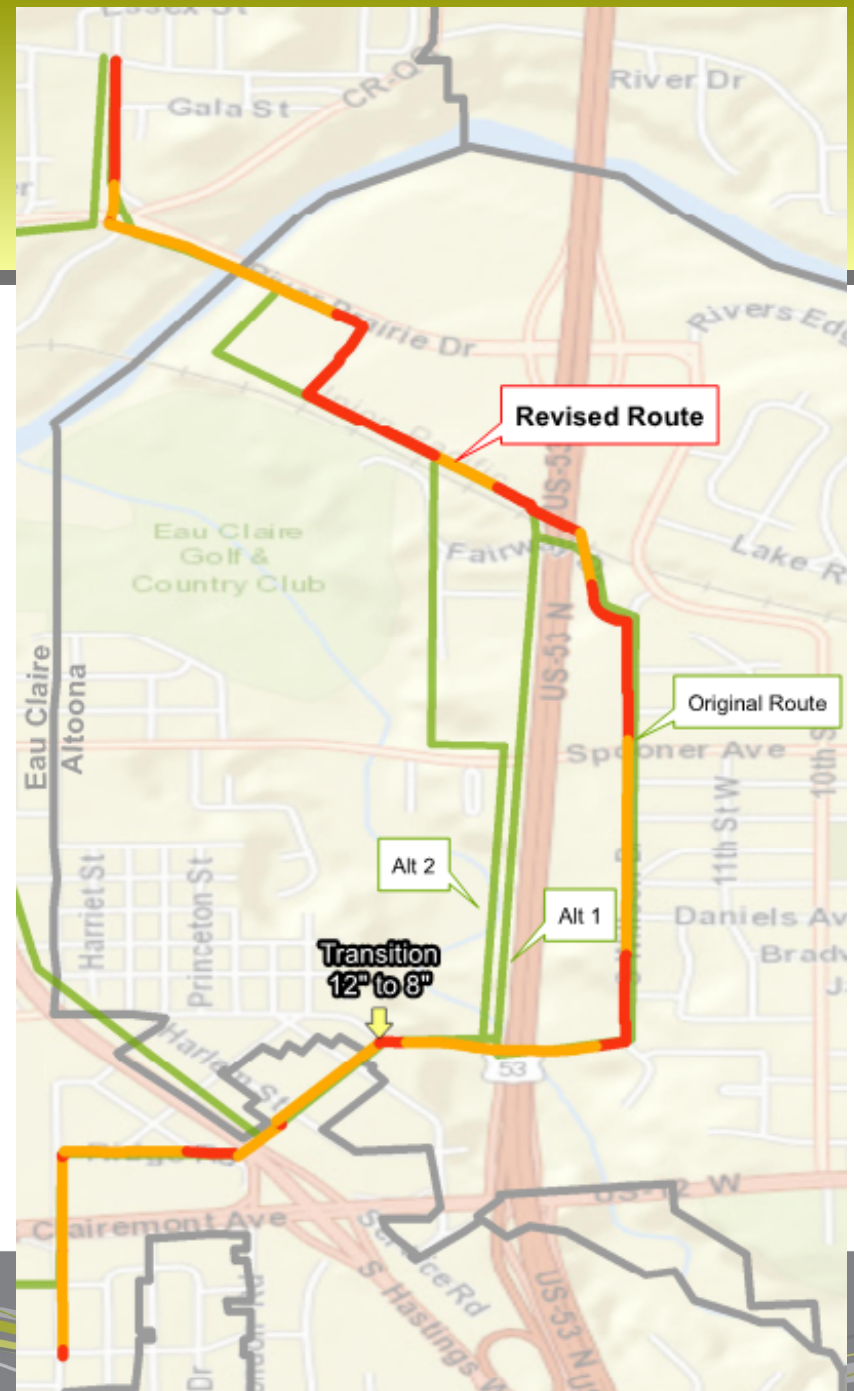
- **Will allow for improved gas supply to areas with low pressure including the southeast side of Eau Claire and Altoona**
- **Will provide additional capacity for future growth**
- **Will reinforce our current system for more reliable gas supply**



# Timeline

## Where and when construction will occur

- Construction is scheduled to begin on 8/31/15
- Construction start date is dependent on approval of all necessary permits
- Construction is planned to begin on the north end of the project and work to the south
- Construction is scheduled to be complete by November 15<sup>th</sup>
- Special care will be taken to make sure restoration is complete prior to winter conditions.



# Alignment Map



# Construction Activity

## ■ Open cut trenching

- Excavate a trench with traditional equipment and install the new pipe directly in the trench



# Construction Activity

## ■ Horizontal Direction Drilling

- Using specialized drilling equipment bore a horizontal hole in the proposed alignment and pull the new pipe through the bore hole





# Construction Activity

## ■ Restoration

- Restoration will be completed quickly upon completion of construction activity.

